

333 Sunset Avenue

Suisun City, California

For Lease



Professional Office Space Available

CALL CENTER | CORPORATE | MEDICAL | DENTAL | LAW | CREATIVE SPACE

EquityRealEstateSolutions.com

CalBRE 01526914





Office Space For Rent

Best Address and Value In Solano County

Executive Suites and Private Offices

1,000 Square feet to 20,000 Square feet

Ask us about Special Move-In Incentives

- 333 Sunset Avenue, located in the heart of Solano County, near the Suisun City Waterfront and Suisun Valley Wine Country.
- Convenient freeway access to San Francisco Bay Area, Napa and Sacramento via Interstate-80 and CA Hwy-12.
- Property features dramatic curved glass walls, polished granite fascia, beautiful lobby and exclusive Glashoff sculpture.
- Flexible design ideally accommodates professional office uses including Executive Suites, Call Centers, Full Service Bank with Drive Through ATM and Medical Office Space.
- Strategically located near Travis Air Force Base, County Seat, Master-Planned Communities, Retail Centers, Shops and Restaurants.

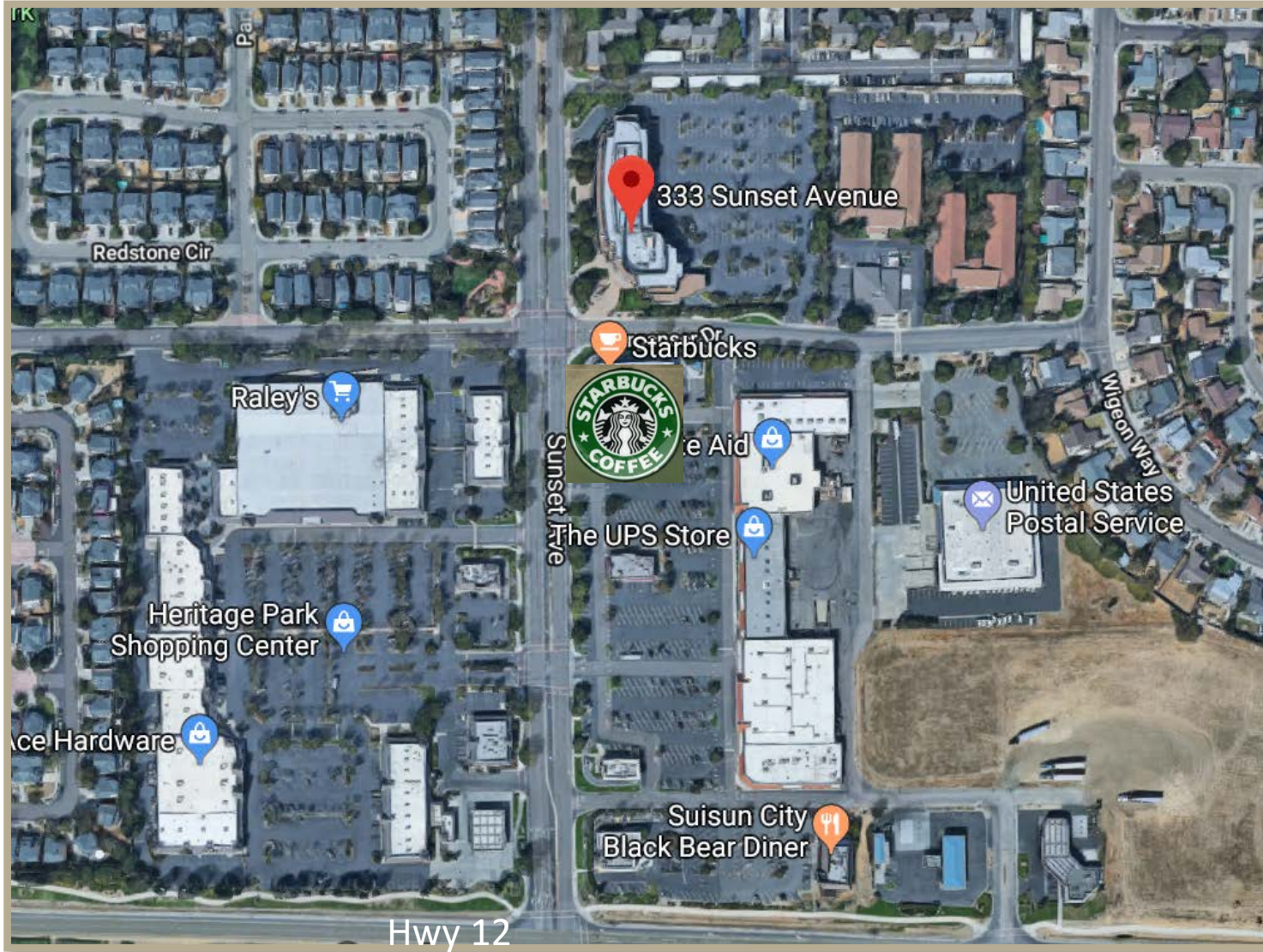
EquityRealEstateSolutions.com

CalBRE 01526914



333 Sunset Avenue

Suisun City, California



Airport Drive Times

12 Minutes to **SUU**
Travis AFB

50 Minutes to **SFO**
San Francisco

45 Minutes to **SMF**
Sacramento

45 Minutes to **OAK**
Oakland

50 Minutes to **STS**
Santa Rosa

20 Minutes to **APC**
Napa

1.2 miles to Downtown Waterfront | 5.9 miles to I-80 | 7.1 miles to I-680

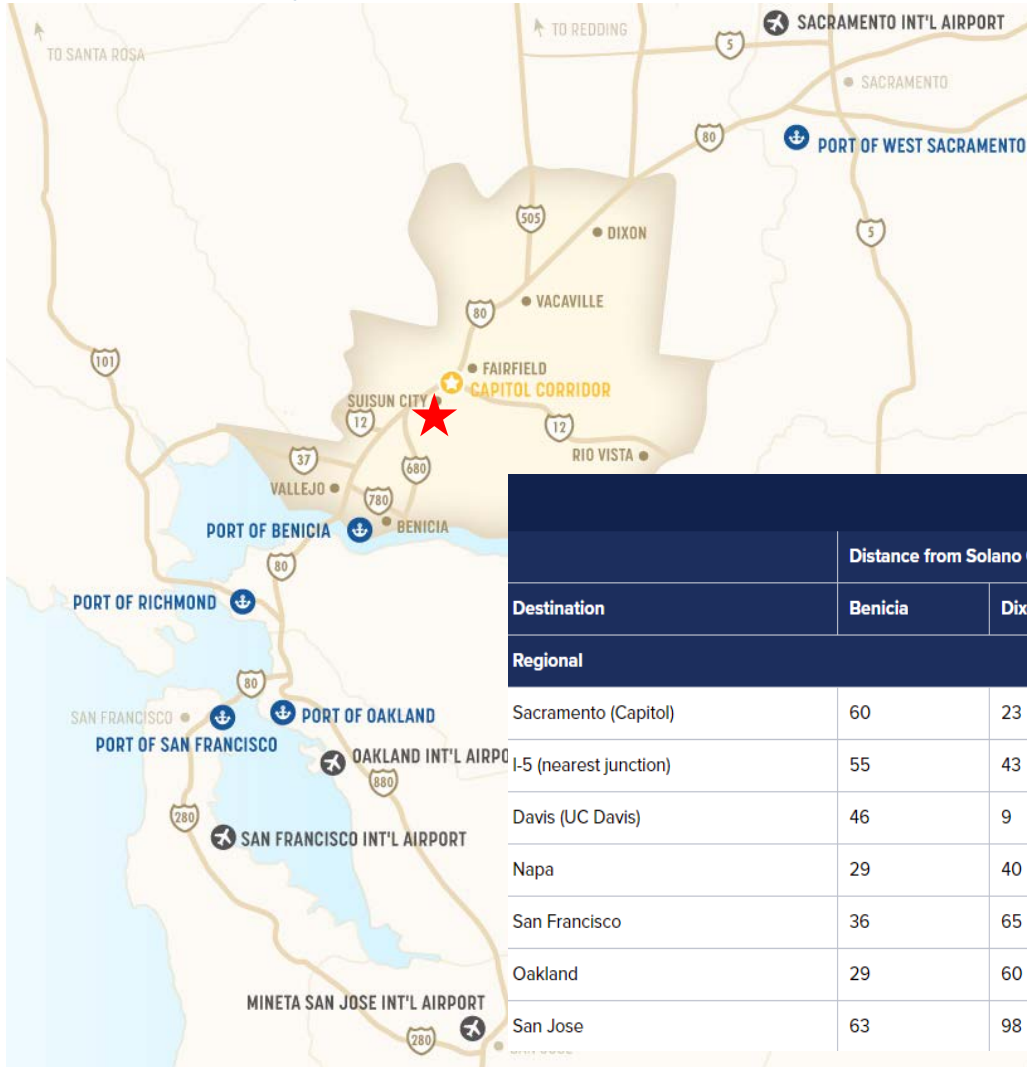
EquityRealEstateSolutions.com

CaIBRE 01526914



333 Sunset Avenue

Suisun City, California



DISTANCE TO MARKETS

Destination	Distance from Solano Cities (miles)						
	Benicia	Dixon	Fairfield	Rio Vista	Suisun	Vacaville	Vallejo
Regional							
Sacramento (Capitol)	60	23	42	44	44	34	57
I-5 (nearest junction)	55	43	40	18	39	46	56
Davis (UC Davis)	46	9	28	35	30	20	44
Napa	29	40	21	42	21	28	16
San Francisco	36	65	46	61	48	54	31
Oakland	29	60	41	53	42	48	26
San Jose	63	98	79	87	81	87	70

EquityRealEstateSolutions.com

CalBRE 01526914

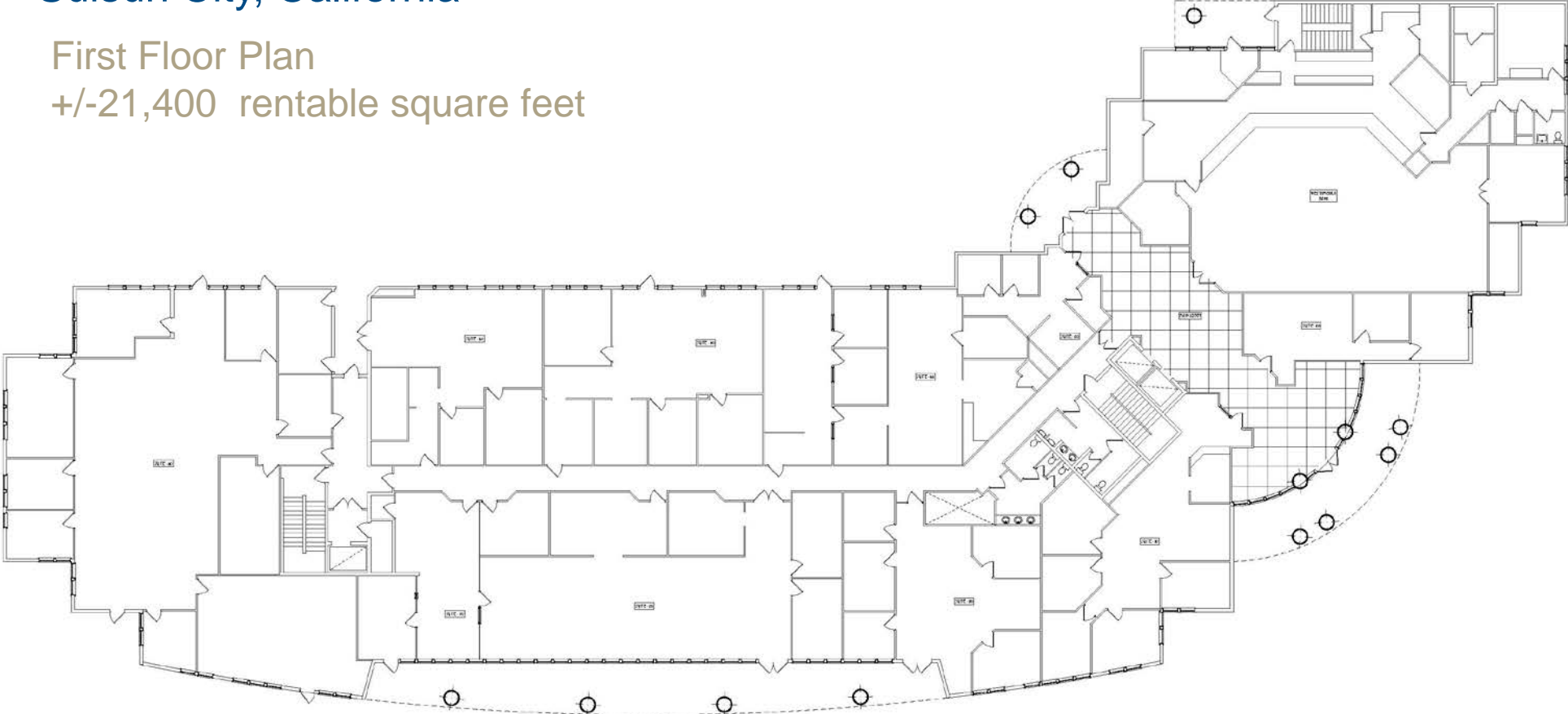


333 Sunset Avenue

Suisun City, California

First Floor Plan

+/-21,400 rentable square feet



STATE OF THE ART CLIMATE CONTROL | AFTER HOURS SECURITY ACCESS SYSTEM | ABUNDANT ON-SITE PARKING FOR CLIENTS & EMPLOYEES

EquityRealEstateSolutions.com

CalBRE 01526914

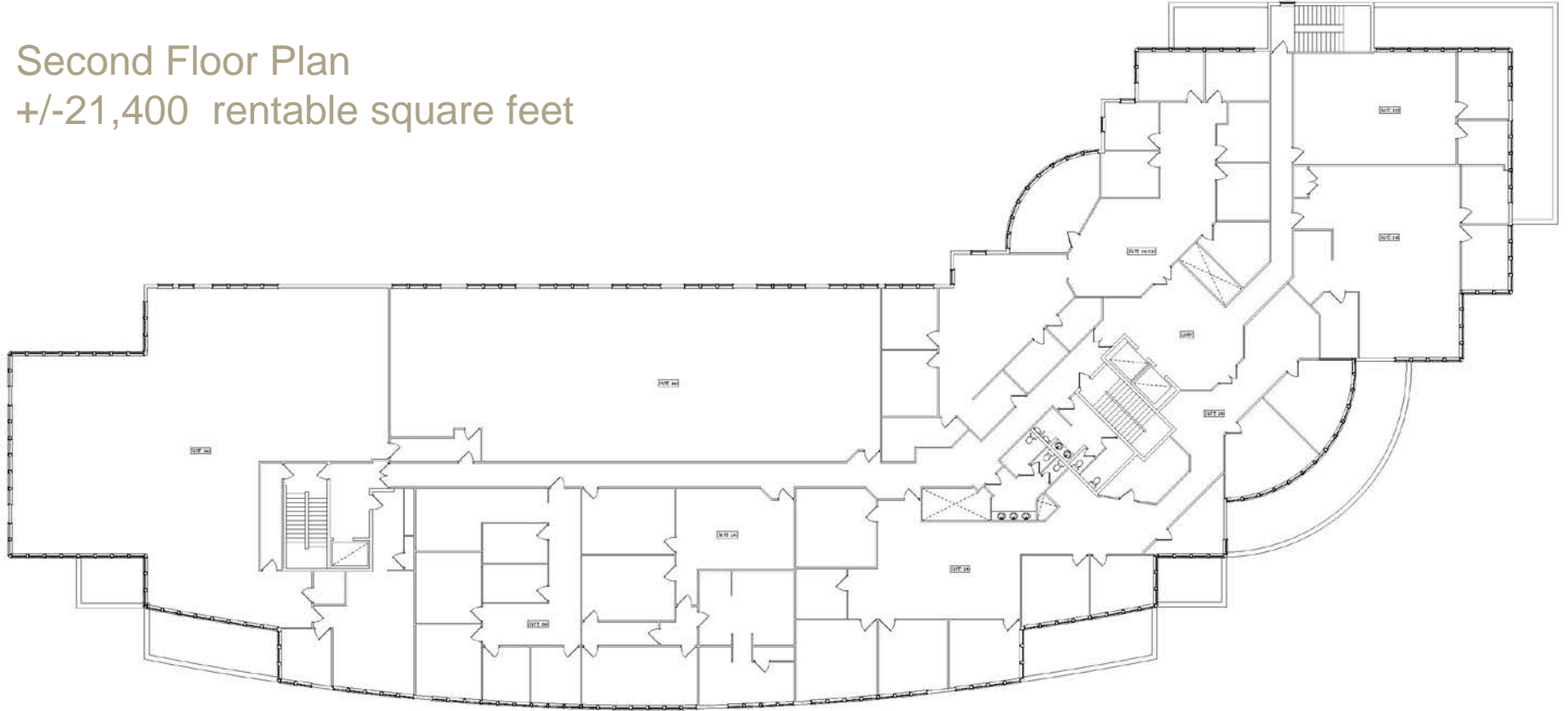


333 Sunset Avenue

Suisun City, California

Second Floor Plan

+/-21,400 rentable square feet



STATE OF THE ART CLIMATE CONTROL | AFTER HOURS SECURITY ACCESS SYSTEM | ABUNDANT ON-SITE PARKING FOR CLIENTS & EMPLOYEES

EquityRealEstateSolutions.com

CalBRE 01526914

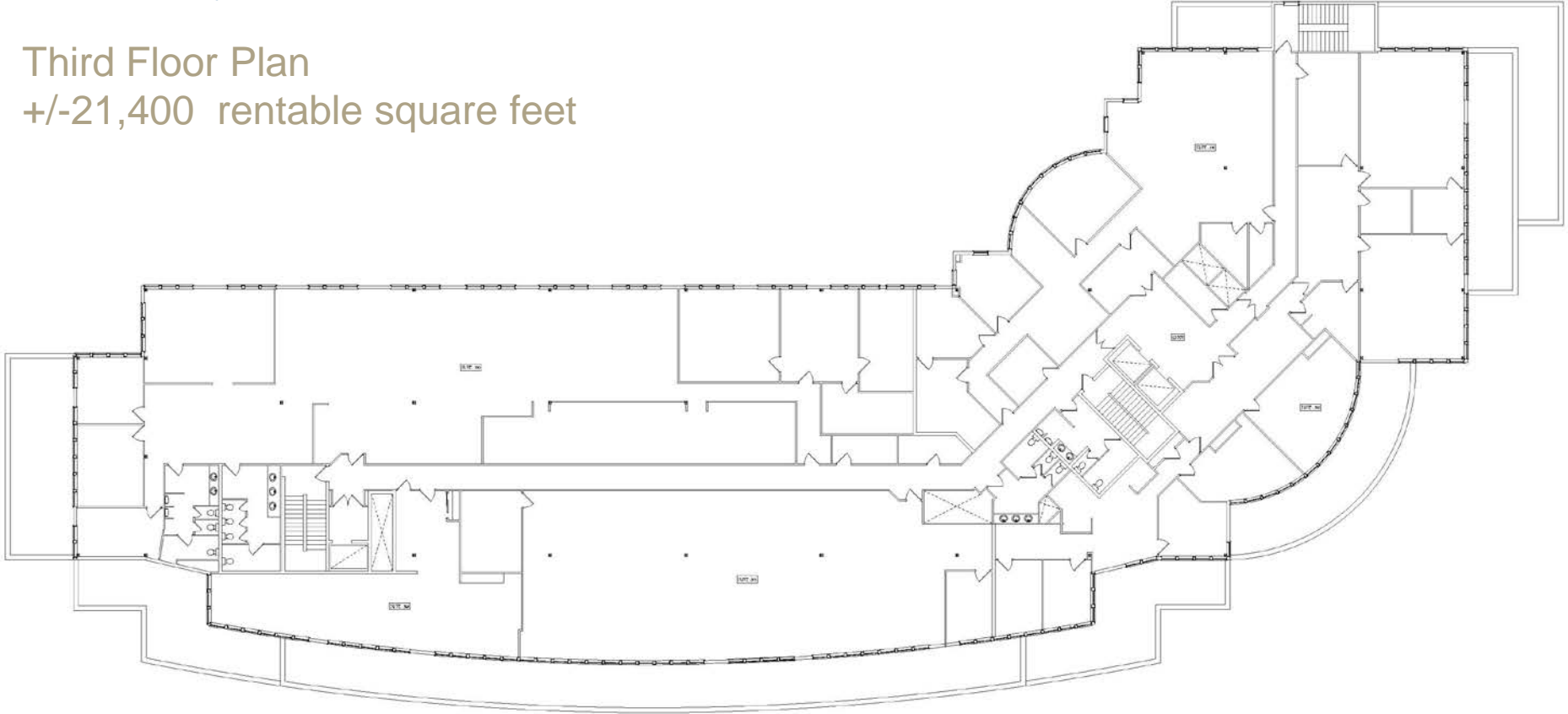


333 Sunset Avenue

Suisun City, California

Third Floor Plan

+/-21,400 rentable square feet



STATE OF THE ART CLIMATE CONTROL | AFTER HOURS SECURITY ACCESS SYSTEM | ABUNDANT ON-SITE PARKING FOR CLIENTS & EMPLOYEES

EquityRealEstateSolutions.com

CalBRE 01526914



333 Sunset Avenue

Suisun City, California

Leasing Information
(888) 515-9283



EquityRealEstateSolutions.com



Carmen Gray

CaIBRE 02040799

(888) 515-9283 Ext. 129

carmen@equityrealestatesolutions.com



Chris Steele

CaIBRE 01526914

(888) 515-9283 Ext. 128

chris@equityrealestatesolutions.com